

Microfluidic Flow Cells

(Available only in the Americas)

Accessories

Avantes proudly offers a range of additional micro flow cell options to cater to diverse analytical needs. These include:

- **Flowcell-FL-Ultem:** Our SMA Fluorescence Flow Cell is built using black Ultem material and comes with easily mountable and replaceable silica optical windows along with 2 SMA connectors. This design ensures outstanding performance for fluorescence-based analyses.
- **Flowcell-Z-XX-YYYY:** Our SMA-Z micro-volume flow cell, offers flexibility in experimental setups with multiple optical path lengths (2.5 mm, 5 mm, 10 mm, 20 mm, and 50 mm). You can specify the material from the following options: Teflon, PEEK, and Ultem material.
- **FLOWCELL-HF-1-PEEK:** This high volumetric absorbance flow cell is designed for flow rates of up to 200 mL/min, ideal for absorbance applications. It excels in process measurements and can handle dark liquids. The flow cell withstands backpressure up to 100 psi at the maximum flow rate and features a 1 mm path length, 2 SMA connectors, and replaceable silica windows.

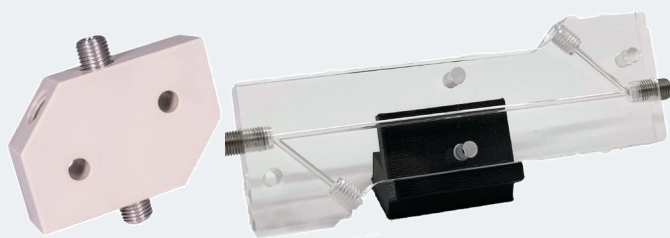
Flowcell-FL-Ultem



Technical Data

Wavelength range	190- 2500 nm
Optical Path Length	6 mm
Sample Volume	30 µL
Tubing OD Connection	1/16" OD Teflon
Pressure Rating	10 Bar
Fiber-Optic Coupling	SMA 905 Female
Material	Black Ultem

Flowcell-Z-XX-YYYY



Technical Data

Wavelength range	190-2500 nm				
Optical Path Length	2.5mm	5mm	10mm	20mm	50mm
Sample Volume	2 µL	13µL	26µL	52µL	130µL
Tubing OD Connection	1/16" OD Teflon				
Pressure Rating	10 Bar				
Fiber-Optic Coupling	SMA 905 Female				
Material	Teflon, PEEK, Ultem				

Flowcell-HF-PEEK



Technical Data

Wavelength range	190- 2500 nm
Optical Path Length	1mm
Sample Volume	10-30 µL
Tubing OD Connection	1/16" OD Teflon
Pressure Rating	10 Bar
Fiber-Optic Coupling	SMA 905 Female
Material	PEEK